



ALL ABOUT CLEEVE

Vol: 28-08 **OCTOBER 2020** FREE

YOUR VILLAGE MAGAZINE

INDEPENDENT - SELF SUPPORTING - DELIVERED FREE TO EVERY HOME

FLOODING IN CLEEVE HILL ROAD



Photo courtesy: Andrew Grogono

Closing COPY DATE: 15th OCTOBER (for NOVEMBER 2020 issue.)



CHAIRMAN'S WELCOME

As most of you know, I am always on the lookout for new contributors to 'AllAboutCleeve'. This month we have a new column which we hope will stimulate interest in bee keeping. Steph Wooster will make regular contributions on her experiences of keeping bees in Cleeve. (See page 6)

Your Chairman was the subject of a lifeboat rescue in September and the experience reminded him of the incredible service the RNLI offers. The time of the "Mayday" to the arrival of the lifeboat was considerably less than an hour and the efficiency and kindness of the lifeboat crew to our frightened Grandchildren will always be remembered. If you value our fishermen and sailors, do keep on supporting this wonderful British institution!

The Corona Virus continues to be the main talking point on the news and we hope everyone will continue to be vigilant. It's good to be able to advise you that the Village Hall is once again open to bookings and some of our regular hirers are already booked in.

Please see note in this edition about the delayed show by the 'Swinging Rascals'.

We have been looking for funding for another free "Cleeve Historical Calendar for 2021" and we still need donations of approx £250.00 to be able to go ahead. Please help if you can by contacting me directly. David Ridley already has an interesting set of historical photos available.

*Andrew Grogono
Chairman AAC*

POST OFFICE

Opening times
Cleeve (Good News)
Tuesday & Friday
08.30 – 12.00
Claverham (Village Hall)
Monday & Wednesday
09.00 -12.00

LOCAL POST-BOX COLLECTION TIMES

	Mon-Fri	Sat.
Woodview Drive	9.00am	07.00am
Bishops Road	4.00pm	10.30am
Main Road (Old PO)	5.15pm	10.30am
Claverham Park	9.00am	11.00am
Yatton PO	5.45pm	11.15am
Congresbury PO	5.15pm	11.15am
Congresbury Broad St.	5.30pm	9.00am
Backwell PO	5.30pm	12.15pm
Clevedon Delivery Office	6.00pm	

ALL ABOUT CLEEVE

Editor	Hilary Perry	
	hilary562000@gmail.com	
Chairman	Andrew Grogono	835264
Secretary	Diana Cook	834621
Distribution	Steve Molloy	834412
Treasurer	Elizabeth Vaughan	
	evaughan@waitrose.com	
	07787 781716	
Graphics	Pauline Leverett	833648
Member	Sarah Cush	832059

We are all grateful to the volunteers who walk the village each month to deliver your copy free of charge

Full copy of our editorial DISCLAIMER and Committee minutes are available for inspection from the Secretary




DUSTBUSTERS

**Commercial and Domestic
Cleaning Services throughout
North Somerset and Bristol**

Established as a family run business in 2003. We have grown through customer referrals from clients who appreciate the quality of our services. We pride ourselves on our ability to 'Go the Extra Mile' for our clients. We are fully insured and carry both public liability and employee insurance.

PLEASE CALL
FOR A FREE
QUOTE
**07966
869888**

Arthur E. Davey & Sons Ltd

Independent Family Funeral Directors
01275 852307

Serving the community for more than three generations

Pre-payment Plans
Private Chapels of Rest
Home visits



Tony Davey Dip F.D. M.B.I.F.D.
Nicola Davey Dip F.A.A.
David Johnston
Yvonne Wadsworth



**82 Silver Street
Nailsea
BS48 2DS**
www.aedavey.co.uk

KEITH C BRITTON & SON

INDEPENDENT FAMILY FUNERAL DIRECTORS



*24 Hour Service
Private Chapels of Rest
Pre-Paid Funeral Plans*



10 High Street, Yatton BS49 4JA
01934 832115

If you'd like a distinctive face covering and help to support a local children's charity then read on.....

These are NOT medical masks but are suitable for wearing on public transport, at the supermarket or where social distancing is not easy.

The total raised to date is around £800 and I'm aiming for the magic £1000.

They are £5.00 each and profits go to a local children's charity.

If you would like a face covering, please take a look at **www.paulinemadehis.co.uk** where all the info is available or email pauline@paulinemadehis.co.uk.

Choice is fairly random but state whether

- pretty or plain(ish) (ie female or male) and maybe a colour preference.

I can post to you if necessary (£2.00 postage for up to 4 face coverings) but local pick-up from Claverham or free delivery is preferred (Cleeve, Yatton, Claverham, Congresbury, Clevedon, Nailsea area). These face-coverings are double fabric layer with a pocket for an optional filter and an aluminium strip to go over the nose which is easily moulded to fit. They are all adult size.

If you'd like more info on the supported charity take a look at: <https://www.bartoncamp.org> for more info.





Library from home

Find all North Somerset Libraries' free online services at www.n-somerset.gov.uk/onlinelibrary



eBooks • eAudiobooks • eComics
digital newspapers and magazines

Not yet a member? Join online today!





ROY DENNIS BRIERLEY

Roy was born on 20th June in Kingswood in Bristol. Roy had an amazing life starting from humble beginnings with school located in a bandstand in a park (due to suspected TB), wartime evacuation to South Petherton to becoming a District Surveyor for Avon County Council in charge of schools and county buildings.

Roy was an accomplished carpenter, builder and engineer. He had a lifelong passion for motorcycling and won many awards and cups for trials riding and scrambling. A few years ago his daughter Maria took him to see a trial near Bath. People there still remembered him for his achievements over 50 years ago.

Over the years Roy rebuilt many old and vintage bikes, often making the parts he couldn't buy. The children remember him tinkering away, balancing his broken glasses on his nose and explaining what he'd done or which part he'd lost.

Motorcycling is where it all started. He met Pauline, his wife, when she and her father learnt to ride Vespas at the Douglas motorcycle factory in Kingswood. They were married in 1959. Roy bought a piece of land in Chapel Lane where he built their house and raised their 3 children. They now have 6 grand children and 4 great grand children.

Always energetic, Roy excelled at many sports. He played squash and cricket through work and joined Cleeve Tennis Club when he retired. Roy played tennis well into his 80s and many in the club will remember him for his bright yellow base ball cap, blue track-suit bottoms and the oldest pair of white trainers ever.

Then in recent years he started playing table tennis again, he'd been good at this as a young man.

Roy encouraged his teenage grand children to play tennis and even with dementia he mostly beat them at table tennis.

With his friends, when he was younger, he did a parachute jump and several cycle rides the most memorable being the London to Brighton.

He was very sociable, funny and a great story teller. He made many friends over the years and loved a good party as long as he didn't have to organise it!

A few years ago Roy was diagnosed with vascular dementia. He enjoyed all the North Somerset activities for Alzheimers including table tennis, singing for the brain, Memory cafe and especially the Tea Dance where he was known for his own brand of dancing.

Roy was in Summer Lane care home for 2 years because of his dementia but there were lots of happy times there as well. Roy's unique humour never left him and he would still have a laugh and a joke with the staff telling them "..... he didn't do it!" He would walk around the home singing Italian Opera (he didn't understand Italian though!) and songs like Pack up your Troubles, Somewhere over the Rainbow, She'll be coming around the Mountain and Just a song at Twilight. When he forgot the words he would make them up.

Roy died on Wednesday 6th May from dementia and Covid19. He was 91 years old and will be dearly missed by all of his family and friends.

Pauline Brierley



'ALLABOUTBEES'

New to All About Cleeve, a bee diary written by a local novice bee-keeper.

As we head into autumn the honey bees are preparing for winter, building up their larder of honey and pollen stores that will get them through to the spring. The flowers of the fields and gardens are getting less and less as the evenings draw in and the days become cooler. During this time the bees are helped with an abundance of flowering ivy. Seldom noticed this crop of nectar is a boon to the bees, if you are passing by a clump on a sunny day you will see it buzzing with insects, bees, butterflies and sometimes wasps too.

Steph Wooster

BEES BUILDING WINTER STORE





SUN HALL 新好
CHINESE FOOD TO TAKEAWAY



7 BISHOP ROAD, CLEEVE, BRISTOL BS49 4NQ
01934 876888

justU
counselling

07519 554016
Reasonable Rates
First session free!

Amanda Bangham FdSc, Dip Couns, Mbacp

 justucounselling@gmail.com  
www.justucounselling.co.uk

 **LOCAL PLUMBER**
207533

FOR ALL YOUR PLUMBING & HEATING REQUIREMENTS FROM TAP WASHERS TO CENTRAL HEATING



L.D. HULLAH 01934 833357
MOBILE: 07976 833974

LAWN MOWERS

Repairs / Servicing / Sharpening /
New & Reconditioned Sales / Ride-on
Tractor Mowers / Shear Sharpening

Tel: (01275) 464403


King Garden Machinery
Unit 5, Chelvey Waterworks
Chelvey, Nr. Backwell

COMMUNITY RESILIENCE

The Village Hall is the assembly point and operating base for the community resilience team (when mobilised) providing help and assistance in an emergency.

So if you need (or are willing to offer) help in an emergency and can not contact Community Resilience by phone please go along to the village hall.

Contact details for Community Resilience can be found in the directory on page 22.


Solarsense
Renewable Energy Installers

Arrange your free, no obligation quote today
Find out how much you could save!



01275 461 800

info@solarsense-uk.com
www.solarsense-uk.com
Helios House, Brockley Lane,
Backwell, Bristol, BS48 4AH



KING GEORGE V PLAYING FIELD

Sinclair Pavilion – a HUGE thank you to National Grid

We are absolutely delighted to be able to share with you now, post lockdown, that our grant application to the National Grid has been successful! On behalf of everyone, we are so grateful and thank them very much as they have very generously donated to the trustees the huge sum of £19,000 to replace the floor and furniture in The Pavilion.

It has enabled us to complete the refurbishment and you now won't recognise the interior! Trustees Colin and Richard during lockdown have worked tirelessly to strip out and repaint, finish the toilets, re-tile and replace the stainless steel fittings in the rear bar area with everyone helping to remove the old carpet, staging, dance floor and seating.

The National Grid money has enabled all the flooring to be completely replaced with wood laminate and new flooring installed behind the bar (thank you to Jamie for fitting). Complemented with new low and high tables, chairs and high bar stools plus dark brown leather sofas.

The mix of furniture and space gives the flexibility for it to be re-arranged into different layouts to suit a variety of functions. The Trustees would be delighted to discuss the hiring of the Pavilion for a family party, coffee morning, corporate event, fitness class, skittles, wake, etc, within government guidelines. We are so excited and invite you all to come and see for yourselves and the trustees will have an open afternoon on Saturday 17th October – 2pm to 5pm.

The Pavilion has been risk-assessed and is COVID-secure with sanitiser, visitors book for track and trace, socially distant seating, 2m floor markings and a one-way system.

*Chair of Trustees: Alice Jones
01934 877208 a.jones34@hotmail.com*

FOOTBALL MATCHES AND OPENING HOURS OF SINCLAIR PAVILION

The Football Club invite you all to come and support their home matches so do bring the family down to watch. Plenty of space to stand socially distant on the sideline to cheer them on. The Pavilion is COVID-secure and the bar will be open on a Saturday afternoon until 7.30pm. Everyone welcome so do pop in for a chat and a drink.

To keep up with fixtures, please do follow them on Facebook and Twitter: Yatton & Cleeve United F.C. or @yaufc

TIP FROM CLEEVE NURSERY

Sow Mustard & Cress for a nutritious salad or garnish. Grow them on a windowsill in damp kitchen roll lined trays or punnets. Sow each thickly but sow the mustard 2 days later. Cover the seeds with paper until the seeds are 25mm [1"] high then remove the covering. Keep moist by regular watering. This is a good way to get young children interested in gardening and produces quick results for impatient minds!



PAVILION SEATING



Our location, choice, quality and value make us hard to beat Visit today!

ENTRANCE GATES MADE BY HAND

FREE no obligation quotes for bespoke gates, sheds and garden buildings



Visit the improved Fountain Store for Hardware, Ironmongery, Tools, Wood Turning Tools, Wood Stains, Gift ideas and much much more



Sheds & Buildings



Fencing



Gates



Garden Furniture



Decking & Landscaping

Open 7 days. Brockley Combe, Backwell, Bristol BS48 3DF

Call us 01934 862 710 www.fountaintimber.co.uk





CLEEVE PARISH COUNCIL UPDATE

We hope that you are all keeping safe and well in these difficult times. Much has happened, of course, since our last contribution to “All About Cleeve” and it is great to see the publication resume.

New Parish Clerk First of all I would like to introduce myself. My name is Andy Warren and I am the new Parish Clerk for Cleeve having taken over from Alicia Fox during August. On behalf of the Council I would like to thank Alicia for all her work over the last few years and we wish her well for the future.

My background is mainly as a career banker with NatWest having worked for them for 36 years between 1972 and 2008. I worked in various locations including Cardiff, Bristol, Exeter and ending up in North Devon. Since then I have worked as a Medical Centre Practice Manager, for an Accountancy firm and, latterly, as a Mortgage Adviser.

I am married and live in Yatton where I was member of the Parish Council for a couple of years before work commitments meant I could not devote the time I felt the role deserved.

Moving into the world of local government is something I have been interested in for some time and I am delighted to take up the role of Parish Clerk and look forward to working with the Councillors on your behalf.

I can be contacted on 07932 191964 and by email on cleeveparishcouncil@hotmail.co.uk

Council Meetings Since March all our Council Meeting have been via “Zoom” and current guidance is that this should continue for the time being.

Details of meetings, agenda’s and details of how to join the “Zoom” meeting are published on the website ahead of meetings.

The Annual Parish Meeting will not take place this year and Councillor Surgeries are on hold but we intend to have more once we are able to do so.

Bristol Airport North Somerset Council refused permission for Bristol Airport to expand in February but the Airport has lodged an appeal. This means there will soon be a Public Inquiry. Our parish is supporting the Parish Councils Airport Association (PCAA) in the Inquiry who will be highlighting our concerns of more noise and traffic in the Village. The PCAA has a great offer from an experienced legal team to represent local communities and parishes. Much of their time will be donated free of charge but we will have costs for expert witnesses and preparatory work. Please contribute to help stop Bristol airport from expanding by donating to <https://www.crowdjustice.com/case/stop-bristol-airport-expansion/>

Have your voice heard - new Citizens’ Panel launches in North Somerset

Residents, students and workers in North Somerset are being urged to get involved in local decision making with the launch of a new citizens’ panel.

North Somerset Council is recruiting a group of volunteers to give regular feedback on local services and issues to help shape the future of the area.

The panel will be consulted on a wide range of topics, from bins and roads to social care and planning, with feedback used to inform how services are run.

North Somerset Council Executive member Cllr Caritas Charles, whose portfolio includes community engagement and consultation, said: “We have a new corporate plan for North Somerset which includes the commitment to be fair and open.



“We are determined to be more transparent and involve our residents in decision making so that we can tackle issues together, and this panel is an essential part of making our ambition happen.

“By joining the panel members will get the chance to influence and inform how local services are delivered.

“No knowledge of the council is needed to sign-up, we are looking for members from across the community to get a true representative picture of what the people who live, work, and study here want and need from their council.

“This is a great opportunity for residents to make a significant impact on the future of their local area.”

The Citizens’ Panel will not replace formal consultations but will complement them and give another way for the people of North Somerset to have their voices heard.

Panel members will be asked to join in regular online surveys, with the first expected in the autumn. There will also be opportunities to get involved in specific focus groups. Anyone aged 18 or over, living, working or studying in North Somerset can sign up by 05 October 2020 and get more information at :

<https://n-somerset.inconsult.uk/consult.ti/citizenspanel/consultationHome>

Disposal of Facemasks One of the current challenges for us all is the need for facemasks. In particular, there seems to have been an increase in masks dropped either accidentally or just carelessly.

It is very important that these are disposed of safely not only due to the health implications but they also form an additional hazard for wildlife.

Facebook You will find us on Facebook if you search **Cleeve Parish Council** and like our page. We update various issues of local interest and activities of the Parish Council.

Andy Warren

www.cleeveparishcouncil.co.uk





WELLS IN CLEEVE

In 1991 and 1992 a survey of wells in Cleeve, Yatton and Claverham was made using information held by Yatton Local History Society, including the 1903 Ordnance Survey map, and from conversations with local residents.

Most of the sites are privately owned and not publicly accessible. Over one hundred wells and pumps have been identified and there may be many more. The map gives an indication of the siting of some wells, most of which were found near or in particularly farmhouses built before 1850, or nearby for example Old Farm, Yew Tree Farm and Appleacre (Old Church Farm) in Cleeve. At Church Farm there are a number of covered ones in the fields to the north providing water for the animals, etc.

There is still evidence of a well on the road verge in Littlewood Lane and another by the footpath near the ruined Ruggs cottage near the Brockley border.

Before mains water became widely available any dwelling, group of dwellings and farm etc needed its own water supply and an underground source was the most reliable. Before 1847 no central government supervision of water supply existed and water was only piped to those who could afford it. Yatton which include Cleeve then did not get a piped water supply until 1910. Some wells were still in use in the early 1950s until they were discontinued because of the need for a demonstrably safe supply for dairy farming.

Use of private water supplies for drinking has been completely replaced by mains water locally (Woodspring District Council 1992). However, water from a small number of wells is still used for gardening.

The earliest reference found to a well in Yatton is a report that the churchwardens spent 16s. 4d. on a bucket and chain for the Church House well in 1473. By 1896 there was the luxury of a cast iron pump and stone trough which can still be seen in the parish church car park adjoining the bier house.

Many wells appear to have been dug outside the original walls of farmhouses but as the houses were enlarged the wells were incorporated in the kitchen, scullery or dairy as at Manor Farm, Claverham and still contain clear water.

Other wells posed challenges of a different kind. One was found at the junction of Church and Chescombe Roads on the site of former cottages where it still remains under the tarmac, albeit filled in to be found by further unsuspecting road menders.

Another interesting well is in a field at Claverham Green Farm where there was once a windmill used to pump water for farming use. It was also used by the neighbouring Grove Farm where the well, now covered is by the back door.

Most wells were stone lined for the first 10 feet, 6 feet across and up to 30 feet deep. The one at Cottage Farm, Claverham was stone lined then went through a layer of shale and had a wider base chamber to increase its capacity. The opening was narrower, made of a flat round stone with a central hole about 2 feet across. On some stones, as at Grove Farm, evidence of supports for a bucket can still be seen. Other wells were completely covered and hand pumps were used to raise the water as at Claverham Court and Prospect House, High Street, Claverham.



Most wells were renowned for not running dry, but when the tannery at Court de Wyck was using a lot of water the wells in Claverham. nearly did so.

At Bishops Farm the well fed a 600 gallon tank in the roof of a barn from which water was piped to eight cattle troughs with the help of a motorised pump. This well was mentioned in auction details of 1854. Similar arrangements existed at Claverham Court. Besides wells, soft water was collected in cisterns from roofs. One still exists in the stable yard of Claverham House and contains clear water. The cistern has a round opening and a stone lined neck with a brick lined vault beneath. The vault is 6 feet deep and 9 feet wide. There was a similar one at Bickley.

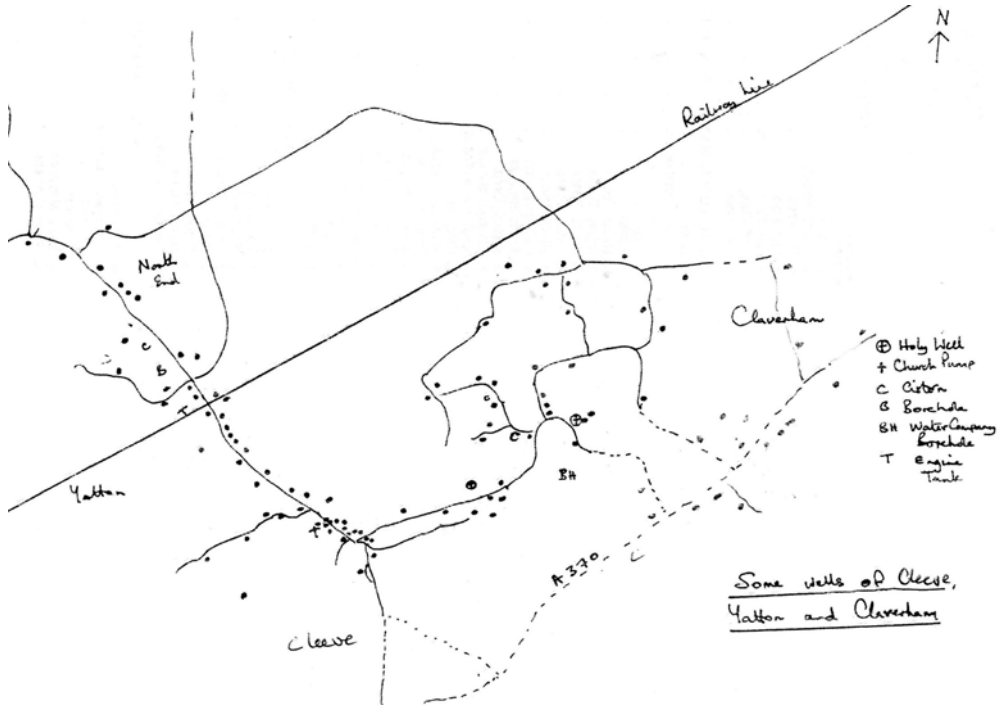
Industrial water supplies were found at Wake & Dean's factory in a deep borehole near the internal railway line. Also, there were the tanks at the railway station for each of the four lines which were used to replenish the engines.

Other interesting wells were the reputedly holy ones, one at Court de Wyck and two near Claverham Road. The name 'Bishops Well' is all that remains, but they were reported in 1923 to have had a reputation for curing consumption or TB. They appear to have been springs which flowed into the Yeo, perhaps from the same source as the Henley wells. Now only a displaced stone marks the site of Bishops Well behind Claverham Road on Brook Farm land.

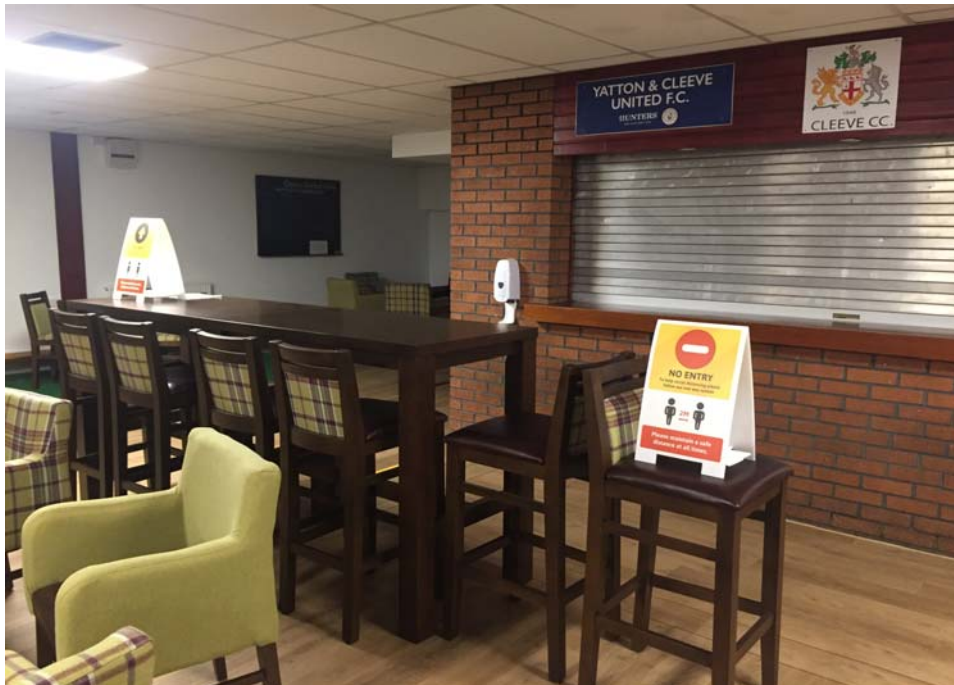
Adapted from an article in Yatton Yesterdays 9, 1992.

Marianne Pitman May 2020





SINCLAIR PAVILION





CLEEVE VILLAGE HALL

Are you looking for a venue for a party, wedding, meeting, workshop or a space for a corporate event? Cleeve village hall could be the venue for you.

Facilities include the main hall with a capacity for up to 120 people, as well as a separate side room & kitchen.

Competitive rates
For further details please contact Gill Roe
gillroe@btopenworld.com

01934 832917



Your local shop for newspapers, off licence, groceries, lottery, PayPoint, cashback and Post Office



Opening hours Mon-Fri 6.00am-10.00pm, Sat-Sun 7.00am-10.00pm
Post Office Tuesday and Friday 8.30am-12 noon
Tel 01934 834893



VILLAGE DIARY

of

Regular events in and around Cleeve



LOCAL MARKETS

Kingston Seymour
First Saturday of month
Kenn and Yatton
Second Saturday of month
Claverham
Third Saturday of month

'Keep Fit Class' Claverham Village Hall

Every Monday night 7pm – 8pm.



Special Events This Month

YATTON LOCAL HISTORY SOCIETY

Tuesday October 6th 7 30pm by Zoom and telephone

Filton in Space by Terry Ransome

Did you know there are 47 Spacecraft in orbit with Filton hardware on board?

If you are not a member and want to join or want to register an email address please contact YLHS treasurer Michael Earle at mjg.earle@gmail.com



Brockley Stores

Fresh produce including seasonal and locally grown
 Good range of cheese and dairy
 In-house sliced ham, charcuterie, olives & anti-pasti
 Daily delivery of artisan breads
 Groceries, sweets and chocolates
 An extensive range of handmade food

Brockley Stores where food is.....

SOURCED WITH CARE

SOLD WITH INTEGRITY

SEVEN DAYS A WEEK

deliciously different

01275 462 753

Brockley Stores
 Main Road (A370)
 Brockley, North Somerset
 Mon - Sat 8am - 6pm
 Sunday 9am - 5pm



Welcome to Cleeve Garden Centre

Your local, independent and traditional garden centre

Expert & friendly Advice

Great plants grown in our own nursery

Gift ideas

Coffee Shop / Cafe

Cleeve Nursery, 138 Main Road, Cleeve, Bristol. BS49 4PW T: 01934 832134



LOCAL DIRECTORY

ALL CODES 01934 UNLESS OTHERWISE STATED

Should your group be listed here? Are your entries correct?

Cancer Research (Yatton Gp.)	Pam Hale	833269
	Marion Clements	838562
Chemists	Backwell	(01275) 462386
	Yatton	832366
Clavertots	Michele Jenkinson	838671
Cleeve Guides	Helen Mortimer	(01454) 771957
Cleeve Scouts/Cubs	Steve Atrill	833912
Cleeve Toddlers	Rebecca York	0759 674905
Community Resilience Coordinators	Steve Molloy	834412 / 07988 656023
	Ross Floyd	(01275) 462211 / 07974 308398
Court de Wyck Association	Clair Barnes	835747
Cricket Club	TBA	
Cricket Youth Team	John Hance	832513
Dentist	Cleeve	835753
Dog Training	Mrs Herman	834498
Dog Warden	bob.davis@n-somerset.gov.uk	(01275) 884113
FOCOS	George Waite	833268
Football Club	Mark Williams	07785 710315
Guide Dogs	Mrs Jane Newton	(01275) 873024
Holy Trinity (Churchwardens)	Nick Cush	832059
Holy Trinity (Team Minister)	c/o Team Office	832184
Ladies Group	Mrs Diana Cook	834621
Medical Centres	Backwell	(01275) 465100
	Yatton	839820
Mothers' Union	Andrea Stoddart	832458
Noise nuisance	Noise Control Officer	634847
North Somerset Council	(All Departments)	888888
Parochial Church Council	Dave Mortimer	838515
Parish Council	Alicia Fox	07584 411326
Playing Field Trustees	Alice Jones	877208
POLICE	(NON-999 calls)	101
Post Offices	Backwell	(01275) 462721
	Yatton	832201
	Cleeve (Good News)	833295
	Claverham (Village Hall)	876581
Registrar of Births, Marriages, Deaths		427552
Sinclair Pavilion (Bookings)	John Hance (Cricket)	hance@ford.com
	Mark Williams (Football)	nuggs01@hotmail.com
Table Tennis Club	Mr Mike Withyman	833986
Tennis Club	Karen Barnett	835150
Tennis Club Junior Coaching	John Tate (johnatetennis@talk21.com)	(01275) 464373
Village Hall Bookings	Mrs Gill Roe	832917
Village Hall Secretary	Diana Cook	834621
YACWAG (Yatt & Cngsby Wildlife Action Gp.)	Mrs. Win Lowman	833596
Yatton History Society	Mrs Marianne Pitman	838801
Yatton Horticultural Society	Mrs Joan Pittock	832790
Yatton Music Society	David Ford	830255
Yatton Ramblers	Peter Marshall	833916



Clarkes Catering of Wrington
 Fresh homemade food delivered for business lunches, funerals, cream teas and cold buffets
Wrington 01934 862085
 email: vicky.clarke@talk21.com
 www.clarkesfood.com




www.paulinemadethis.co.uk
 01934 833648 ~ original and hand-made

J. A. Frost
B.A., B.Mus., Hon.TCM
 (formerly Senior Examiner in Music, Trinity College London)
Consultant for all levels of music examinations, and tuition in music theory
 27 Cleeve Drive, Cleeve, BS49 4NW
 Tel: 01934 832589

IONAIDA
 Interior Design, curtain, make-up, fitting and installation advice

- Curtain advice, make-up and fitting.
- A large range of fabric and wallpaper samples
- Blind ranges: Venetian, Vertical, Roller, Panels and Roman blinds.
- Poles and Tracks.
- Upholstery fabrics and re-upholstery.
- Paint colour and wallpaper advice.
- Accessory make-ups, cushions, bed-covers, duvets, window seat cushions...

A large selection of fabrics for all budgets
 Over 24 years experience - Company established in 2005
Tel: 01275 464057 or 07854 525472
 www.ionaida.com

FOCOS
(Friends Of Cleeve Over Sixties)

Winning numbers for the FOCOS lottery:

1st August	22	Audrey Stephens
29th August	16	Margaret and Paul Burrell
5th September	32	Gill Gould

Well done to all our winners, especially to Audrey and the Burrells who live outside Cleeve, but are great supporters of FOCOS.

With the continued uncertainty surrounding everything, we look forward to resuming our normal programme of events as soon as we can.

However your continued support of the FOCOS lottery will ensure that we can all look forward to some great times in the future.

S.E. HARRIS
 TREE SERVICES LTD
01934 835652
07957 156358
 ALL TREE WORK UNDERTAKEN
 FREE QUOTATIONS
 NC Arb - NPTC - Fully Insured
 e: sam@seharristreeservices.co.uk
 w: seharristreeservices.co.uk

AAC Advertising Rates

One eighth page	£50 p.a.
One quarter page	£100 p.a.
Half page	£175 p.a.
Full page	£275 p.a.
Back page	£350 p.a.

Interested? Contact us for details
6,200 copies published annually
 and read by many more





✠ CHURCH NOTICE BOARD ✠ OCTOBER

Holy Trinity, Cleeve
 Sunday 4th 10am -
 Harvest Thanksgiving
 Sunday 11th 10am -
 Shared Parish Communion
 Sunday 18th 10am -
 Holy Communion

St. Barnabas, Claverham
 Sunday 4th 11am -
 Harvest Thanksgiving
 Sunday 18th 11am -
 Holy Communion

PRAYERS FOR HEALING &
 WHOLENESS
Holy Trinity, Cleeve
 Thursdays 9.30am

CLEEVE VILLAGE HALL
 Sunday 25th 10am - Cafe Church
 Bring your own refreshments



PRIVATE PRAYER
 THE CHURCHES ARE OPEN FOR PRIVATE
 PRAYER ON THE FOLLOWING DAYS:
 ST. BARNABAS -
 Wednesdays 10 - 12
 Sundays 10 - 12 [1st and 3rd Sunday]
 HOLY TRINITY -
 Thursdays 10 - 12
 Sundays 3 - 5

NB. FACE COVERINGS NEED TO BE WORN IN OUR CHURCH BUILDINGS WHEN WE GATHER.
 PLEASE CONTACT THE FOLLOWING PEOPLE IN THE WEEK BEFORE IF YOU INTEND TO COME TO A SERVICE:
 St. Barnabas - Rev John Angle 835521 - johnangle@btinternet.com
 Holy Trinity - Rev Nigel Thomas 283340 - nigelbthomas1@gmail.com
 Nick Cush 832059 - nickcush@btinternet.com

PARISH CHURCH MAGAZINE
 THE MESSENGER - an e-version is available.
 Email - carole.perrott@gmx.com
 We are also on Facebook - Cleeve and Claverham Messenger.